

# The 2588

McLennan County



PRICE FROM:

**\$321,900**

 2,598 Ft<sup>2</sup>

 4 Bedrooms

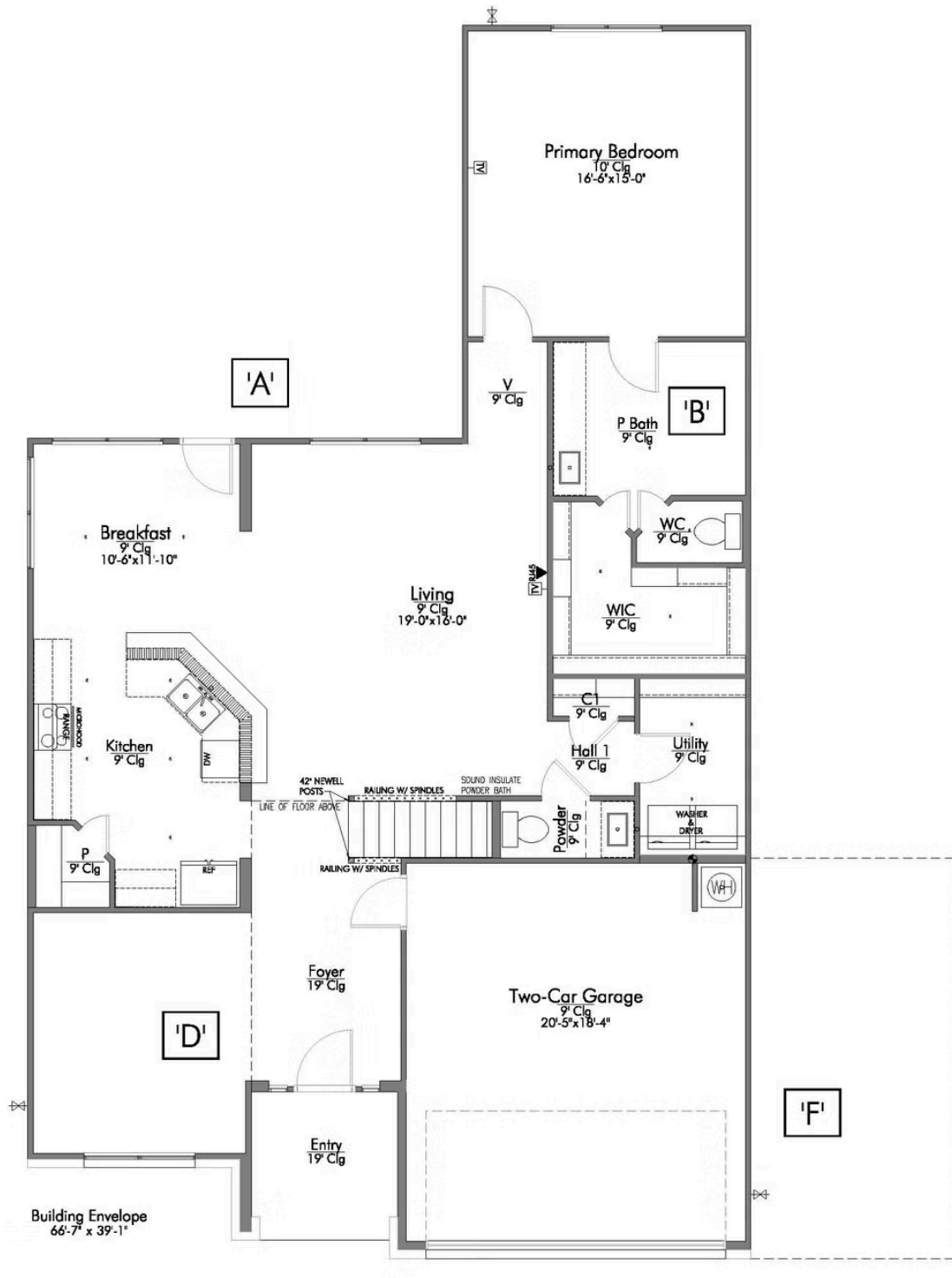
 2.5 Bathrooms

 2 Car Garage

**Some images shown may be from a previously built Stylecraft home of similar design. Actual options, colors, and selections may vary. Contact us for details!**

Looking to wow your visitors? You are instantly going to fall in love with this luxurious 4 bedroom, 2.5 bath home! The curb appeal of this home is to die for and the entrance to this home is truly stunning. Welcomed by an 8-foot door, you're immediately greeted by a grand 18-foot foyer. Once inside, you will be wowed by the spacious and thoughtful layout, a large utility room, and all of the natural light let in by the windows in the breakfast nook and living room. Also on the main floor is an oversized primary bedroom suite with a walk-in closet that dreams are made of. Upstairs, you will find spacious secondary bedrooms and a loft that your family will love.







**STYLECRAFT**  
*On your lot*

# The 2588

McLennan County Community

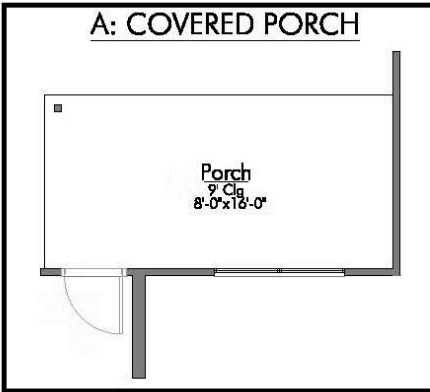


Questions?  
1-866-757-1235

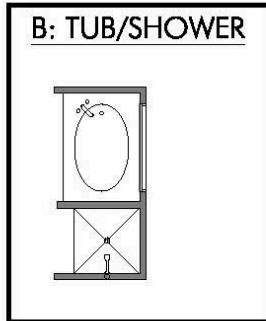


In continuous effort by Stylecraft Builders to improve the quality of your home, we reserve the right to change features, prices, plans and specifications without notice. Floorplans and elevation renderings are artists' conceptions only. Significant changes may be made during or after the construction of the model homes. Stylecraft Builders reserves the right to modify, relocate or eliminate any or all of the features, specifications, plan utilities, design or shape thereof, all without notice or obligations to any purchaser. Price range reflects base price only. Location premiums will be charged for certain locations and are not included in the base price of the home. Additional association fees may apply. Other fees may also apply. Amenities are proposed and planned or may be under construction. All square footages are approximate square footages of the total livable space. Water heater location deemed per city municipality code. Please see your onsite sales associate for additional information and more details. © 2022 Stylecraft Builders.

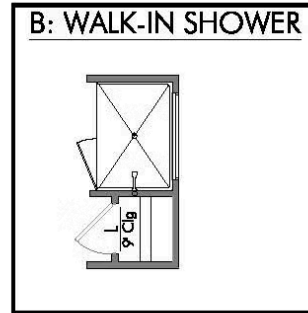
**A: COVERED PORCH**



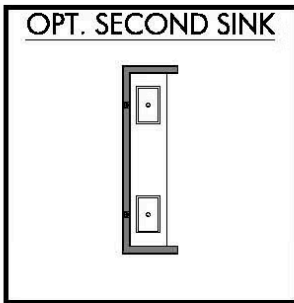
**B: TUB/ShOWER**



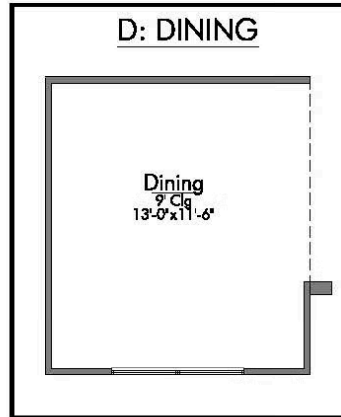
**B: WALK-IN SHOWER**



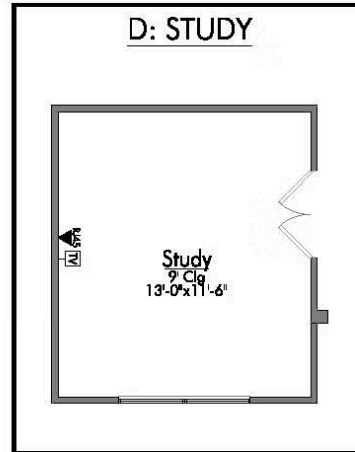
**OPT. SECOND SINK**



**D: DINING**

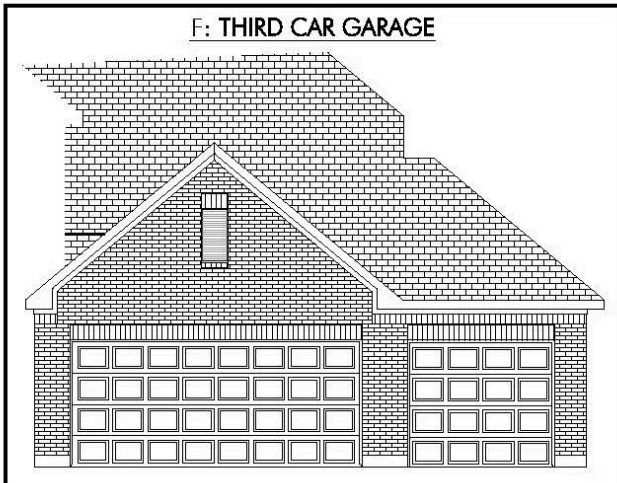


**D: STUDY**

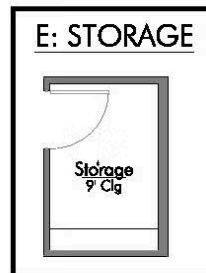


**LOCATE:**  
1 EXTRA RJ45 OUTLET  
1 EXTRA TV OUTLET

**F: THIRD CAR GARAGE**



**E: STORAGE**



**E: THIRD BATHROOM**

