

The 1500

McLennan County



PRICE FROM:

\$224,900

 1,548 Ft²

 3 Bedrooms

 2 Bathrooms

 2 Car Garage

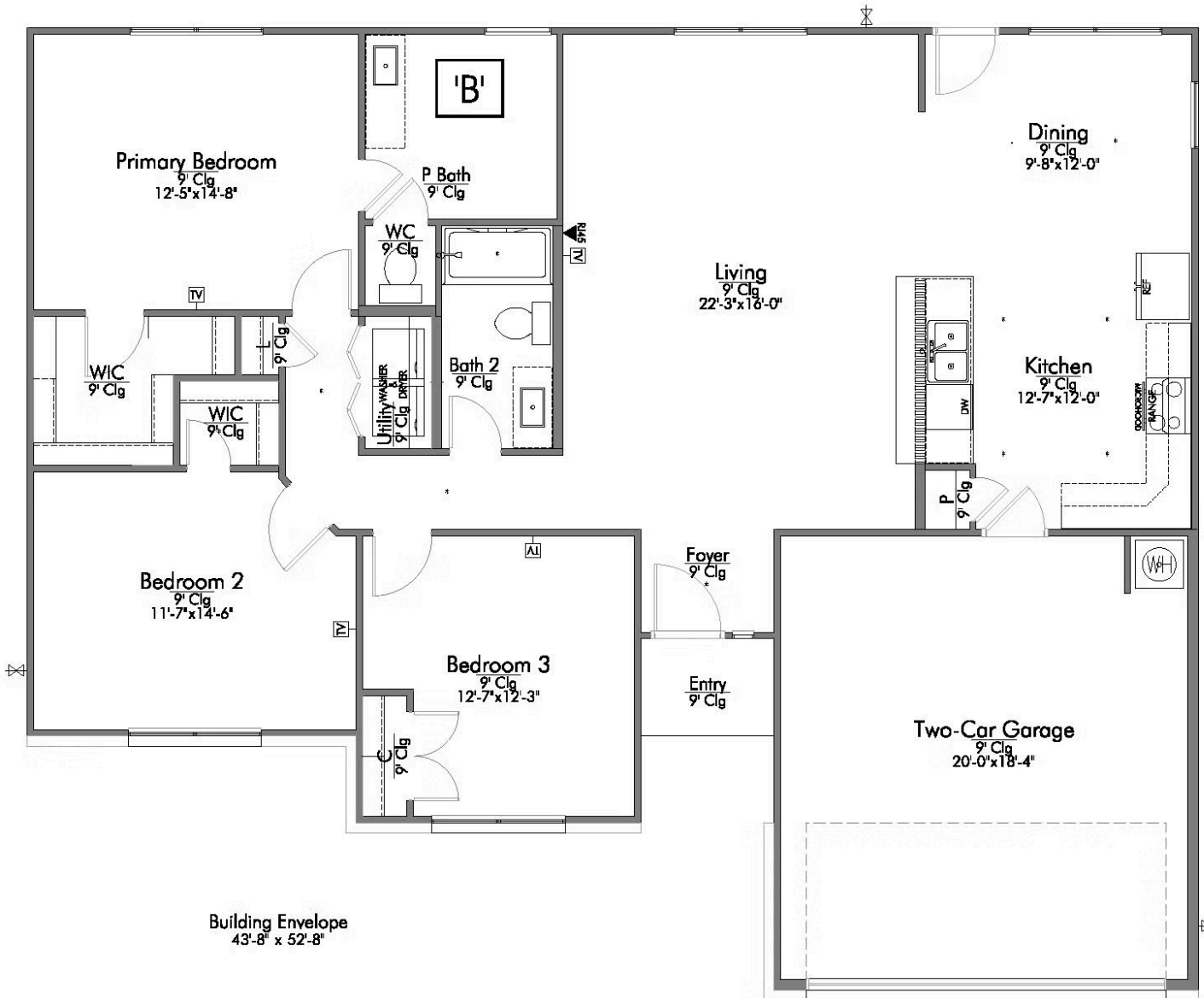
Some images shown may be from a previously built Stylecraft home of similar design. Actual options, colors, and selections may vary. Contact us for details!

Welcome to The 1500 by Stylecraft On Your Lot! Step into the foyer and be greeted by an inviting open common space. The kitchen, featuring a convenient peninsula with a sink, flows seamlessly into the dining room, which offers easy access to the backyard—perfect for indoor-outdoor living.



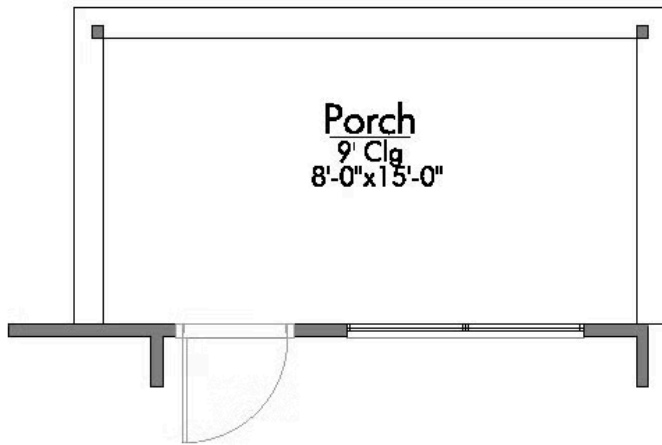


Questions?
1-866-757-1235

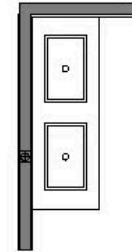


In continuous effort by Stylecraft Builders to improve the quality of your home, we reserve the right to change features, prices, plans and specifications without notice. Floorplans and elevation renderings are artists' conceptions only. Significant changes may be made during or after the construction of the model homes. Stylecraft Builders reserves the right to modify, relocate or eliminate any or all of the features, specifications, plan utilities, design or shape thereof, all without notice or obligations to any purchaser. Price range reflects base price only. Location premiums will be charged for certain locations and are not included in the base price of the home. Additional association fees may apply. Other fees may also apply. Amenities are proposed and planned or may be under construction. All square footages are approximate square footages of the total livable space. Water heater location deemed per city municipality code. Please see your onsite sales associate for additional information and more details. © 2022 Stylecraft Builders.

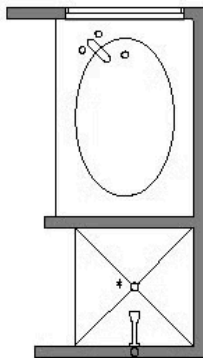
A: COVERED PORCH



P BATH SECOND SINK



B: TUB/SHOWER



B: WALK-IN SHOWER

