

# The 1451

Madison County



PRICE FROM:

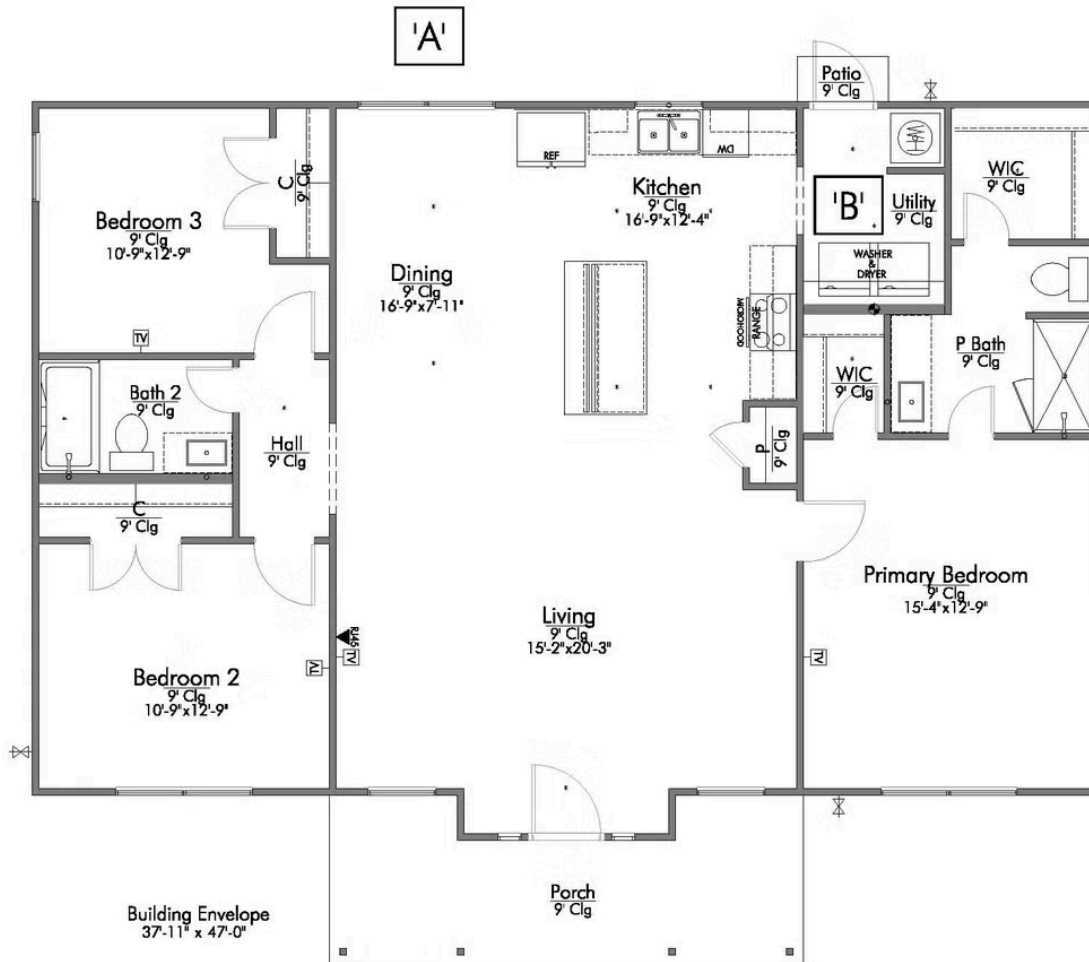
**\$213,900**

 1,474 Ft<sup>2</sup>

 3 Bedrooms

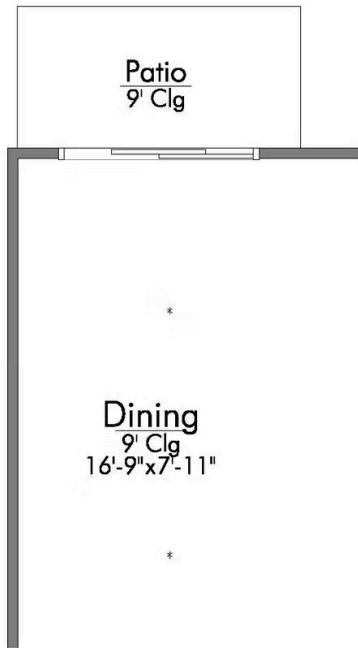
 2 Bathrooms





*In continuous effort by Stylecraft Builders to improve the quality of your home, we reserve the right to change features, prices, plans and specifications without notice. Floorplans and elevation renderings are artists' conceptions only. Significant changes may be made during or after the construction of the model homes. Stylecraft Builders reserves the right to modify, relocate or eliminate any or all of the features, specifications, plan utilities, design or shape thereof, all without notice or obligations to any purchaser. Price range reflects base price only. Location premiums will be charged for certain locations and are not included in the base price of the home. Additional association fees may apply. Other fees may also apply. Amenities are proposed and planned or may be under construction. All square footages are approximate square footages of the total livable space. Water heater location deemed per city municipality code. Please see our onsite sales associate for additional information and more details. © 2022 Stylecraft Builders.*

## A: DINING SLIDING DOOR/PATIO



## B: UTILITY POCKET DOOR

