

The 1033

Liberty County



PRICE FROM:

\$172,900

 1,033 Ft²

 2 Bedrooms

 1 Bathrooms

Some images shown may be from a previously built Stylecraft home of similar design. Actual options, colors, and selections may vary. Contact us for details!

Thoughtfully designed and perfectly sized, The 1033 offers 1,033 square feet of smart living space tailored for versatility and comfort. This 2-bedroom, 1-bathroom home is ideal for small families, young professionals, or those looking to build a charming casita on recreational land, whether it's for weekends at the ranch, hunting trips, or hosting guests.

Upon entry, you're welcomed into an open-concept living and dining area that flows seamlessly into the kitchen, creating a warm and inviting atmosphere. The kitchen features a large island with a breakfast bar, perfect for family gatherings or entertaining friends. The living area is bright and airy, with large windows that let in plenty of natural light. The bedrooms are spacious and comfortable, providing a peaceful retreat after a long day. The bathroom is modern and functional, with a walk-in closet for extra storage. The home is finished with high-quality materials and attention to detail, ensuring a move-in ready experience.





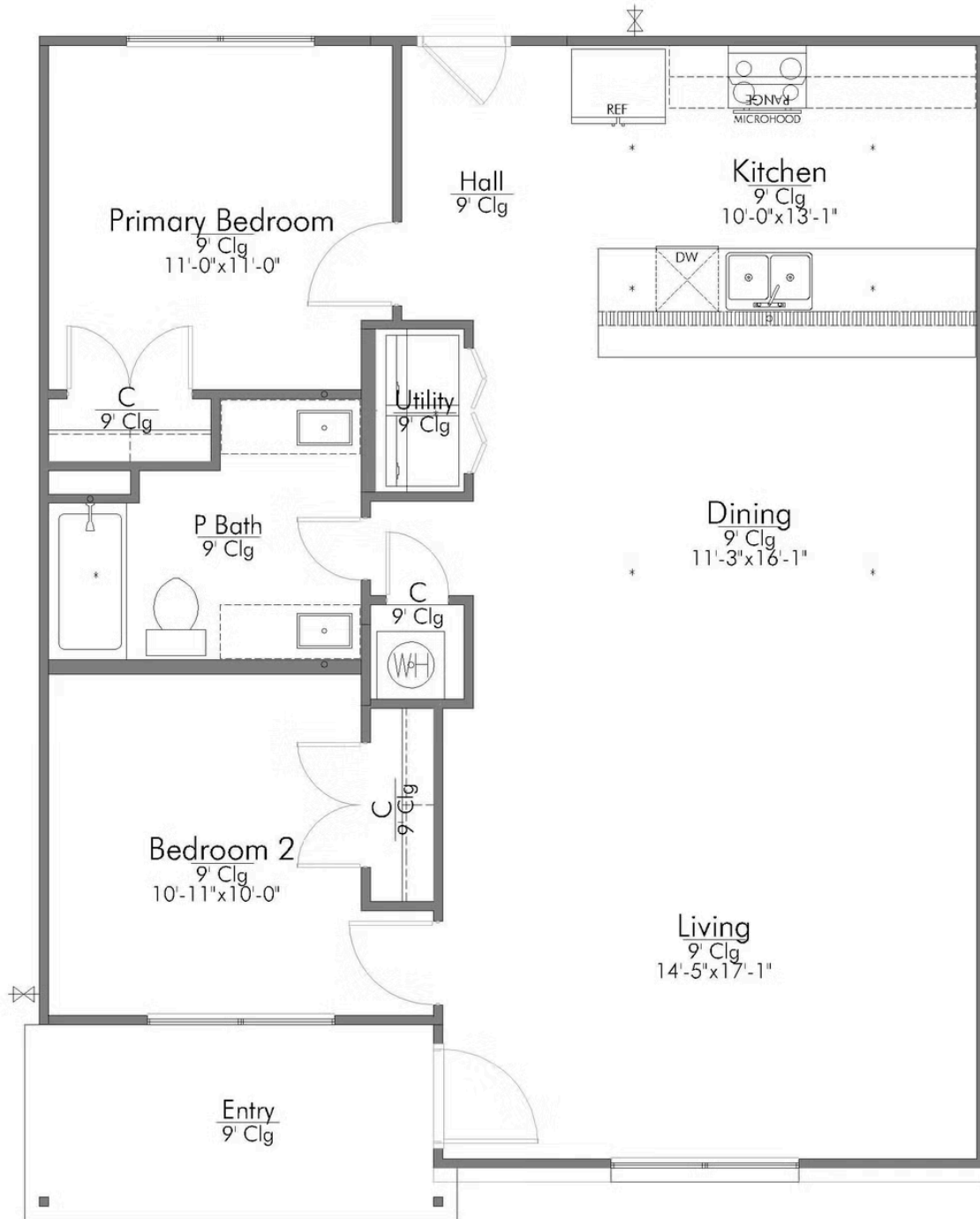
STYLECRAFT
On your lot

The 1033

Liberty County Community



Questions?
1-866-757-1235



Building Envelope
37'-10" x 30'-9"



In continuous effort by Stylecraft Builders to improve the quality of your home, we reserve the right to change features, prices, plans and specifications without notice. Floorplans and elevation renderings are artists' conceptions only. Significant changes may be made during or after the construction of the model homes. Stylecraft Builders reserves the right to modify, relocate or eliminate any or all of the features, specifications, plan utilities, design or shape thereof, all without notice or obligations to any purchaser. Price range reflects base price only. Location premiums will be charged for certain locations and are not included in the base price of the home. Additional association fees may apply. Other fees may also apply. Amenities are proposed and planned or may be under construction. All square footages are approximate square footages of the total livable space. Water heater location deemed per city municipality code. Please see your onsite sales associate for additional information and more details. © 2022 Stylecraft Builders.