

The 3135

Lee County



PRICE FROM:

\$391,900

 3,230 Ft²

 4 Bedrooms

 3.5 Bathrooms

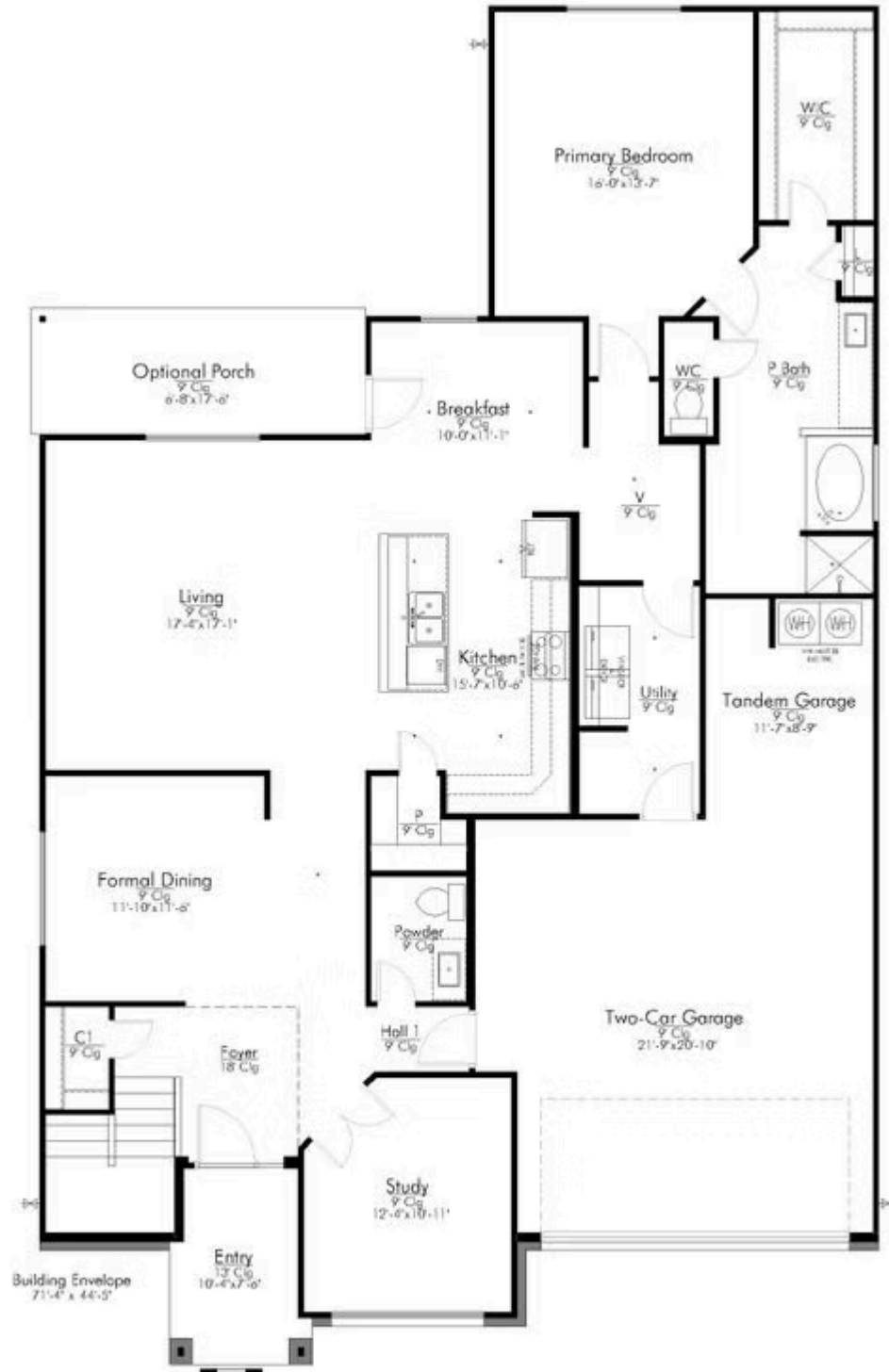
 2 Car Garage

Get ready, the 3135 is going to blow you away!

Downstairs, the entryway sets the tone for this welcoming home. To your left, you'll find a tucked-away staircase and a convenient coat closet. To the right, a spacious study with a large window creates the perfect space for a home office or private retreat. As you exit the study, you'll approach a powder room and a door leading to the two-car tandem garage, which offers additional storage or parking space.

From the garage, double access leads to a walk-through utility room that connects directly to the luxurious primary bedroom. The primary suite is a true haven, featuring a generously sized bedroom, a walk-in closet, and an en-suite bathroom designed for comfort







STYLECRAFT
On your lot

The 3135

Lee County Community



Questions?
1-866-757-1235



In continuous effort by Stylecraft Builders to improve the quality of your home, we reserve the right to change features, prices, plans and specifications without notice. Floorplans and elevation renderings are artists' conceptions only. Significant changes may be made during or after the construction of the model homes. Stylecraft Builders reserves the right to modify, relocate or eliminate any or all of the features, specifications, plan utilities, design or shape thereof, all without notice or obligations to any purchaser. Price range reflects base price only. Location premiums will be charged for certain locations and are not included in the base price of the home. Additional association fees may apply. Other fees may also apply. Amenities are proposed and planned or may be under construction. All square footages are approximate square footages of the total livable space. Water heater location deemed per city municipality code. Please see your onsite sales associate for additional information and more details. © 2022 Stylecraft Builders.

